



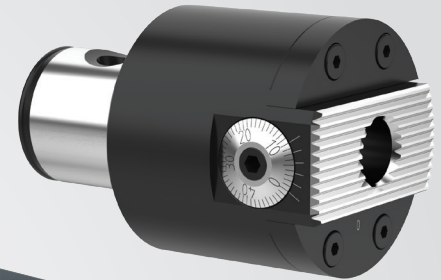
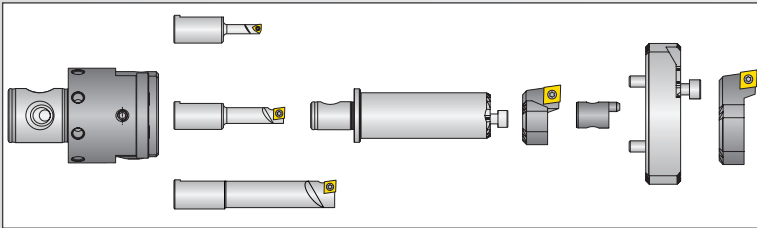
PRIMEBORE

- Diameter range: **0.236" - 5.039"** (6 mm - 128 mm)
- Available in both Imperial (I) and Metric (M)
- Inserts and master shanks sold separately
- Insert form 20 and 101 available

Kit Promo Price: \$1,795.00

Sale ends 12/31/2023

Imperial form 101 / 211 insert pictured | **Kit No. 104088**



Kit Components	Form 101 / 211	Form 20 / 211	Form 101 = CCMT 060204 Form 211 = WBGX030102 Form 20 = TOGX080202
Imperial Kit Part No.	104088	104089	
Metric Kit Part No.	103088	103089	
(1) Imperial Boring Head	451001	451001	
(1) Metric Boring Head	450001	450001	
(3) Boring Bars	450026 (Form 211) 450027 (Form 101) 450028 (Form 101)	450026 (Form 211) 450038 (Form 20) 450039 (Form 20)	
(2) Insert Holders	450022 (Form 101) 450023 (Form 101)	450040 (Form 20) 450041 (Form 20)	
(1) Serrated Tool Body	450021	450021	
(1) Serrated Slide	450024	450024	
(1) Coolant Delivery Section	450125	450125	
(3) Service Keys	003195 (s4) 515451 (T6) 515452 (T8)	003195 (s4) 515451 (T6) 515452 (T8)	

Master Shanks with MVS connection sold separately.

**CAT | Dual Contact CAT | BT | Dual Contact BT
HSK | PSC | NMTB | MT**

Reference section B10-F in the Wohlhaupter Master Catalog for more information.

